

## INFRARED INSPECTION

Azima DLI provides a full range of condition monitoring services, including infrared testing, an inspection process using infrared cameras as a means to “see” and “measure” thermal energy emitted from equipment at your plant. In other words, it allows us to see what the human eye cannot.

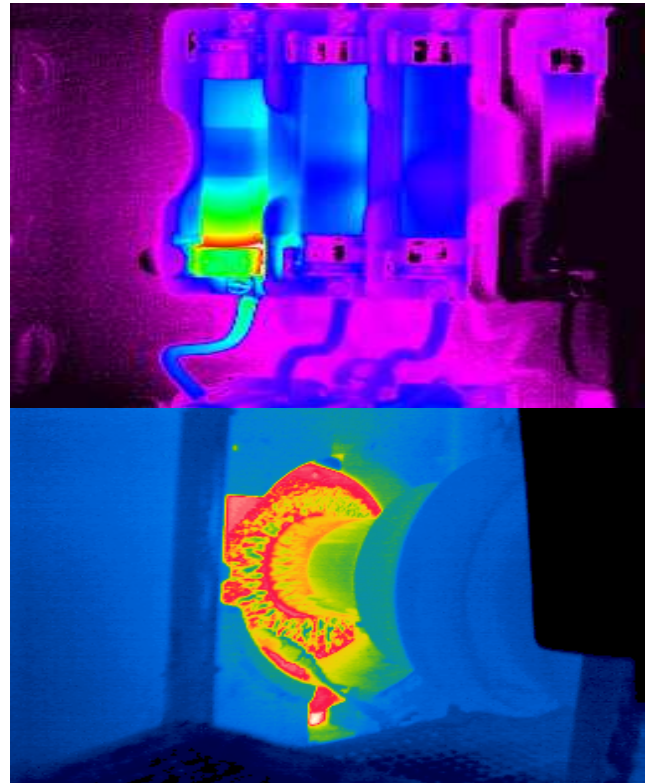
### INVISIBLE TO THE HUMAN EYE

In the infrared realm, even very cold objects emit infrared. Objects with higher temperatures emit higher levels of infrared radiation. Our experts use infrared thermography cameras to detect and measure heat levels in a range of equipment. Such testing is ideal for electrical wiring, furnaces, furnace tubes, bearings, batteries, motors, motor control centers and breakers, and more. Azima DLI has a proven track record in electrical surveys, insulation testing, and refractory testing for major clients such as Shell, Exxon Mobil, BP, Dow Chemical, Air Liquide, Folgers Coffee, and others.

### WHY INFRARED?

The benefits of infrared testing to your organization are numerous. Companies employing infrared methods understand that:

- Nearly everything gets hot before it fails – Finding and fixing a poor electrical connection before a component fails can save you the much greater costs associated with downtime, production losses, power outages, fires, and catastrophic failures.



- Decreased risk of fire – According to the National Fire Protection Association (NFPA), 28% of all industrial fires are electrical-related.
- Increased efficiency – Overheating electrical connections can cause component and system inefficiencies.
- Increased uptime – Monitoring equipment with infrared testing allows you to locate problem components, and then manage the equipment until the next planned shutdown or make more immediate plans to repair the equipment in a prepared, proactive manner. Overheated electrical connections that go undetected cause inefficiencies at best, and catastrophic failure at worst.



## WHY AZIMA DLI?

Azima DLI offers a full range of condition monitoring services, utilizing infrared testing as well as other technologies, so you enjoy the convenience and continuity of working with a single vendor for your condition monitoring needs. In addition, Azima DLI is armed with multiple cameras and full-time, on-staff thermographers rather than part time subcontractors. Some of our infrared experts boast nearly 20 years of experience, all are certified, and our nationwide staff is poised and ready to carry out your infrared testing. Your service may range from quarterly inspections to large, full-scale programs requiring daily attention from one of our thermographers.

## EXPERT DIAGNOSTIC TEAM

Multi-disciplinary; experts in Vibration, Oil Analysis, Infrared Thermography, Motor / Battery testing, Reciprocating Engine / Compressor Analysis (REA).

- 40+ Expert Analysts
- 8 Licensed Professional Engineers

## CUSTOMER BENEFITS

- Sustainable condition monitoring programs with high ROI
- More cost-effective than in-house program
- Puts the industry's leading experts at customer's fingertips
- Focuses attention on urgent problems
- Provides actionable advice to the customer
- All information easily accessible via WATCHMAN Reliability Portal™
- No hardware purchase required

## CALL US TODAY!

Azima DLI is transforming how companies perform maintenance, and we can help you too. To learn more about how WATCHMAN™ can deliver outstanding value to your company through our subscription based, web delivered condition monitoring services, contact us at toll free in the U.S. at 800.482.2290 or international at (+1) 781.938.0707, or visit us online at [www.AzimaDLI.com](http://www.AzimaDLI.com).

**KNOWING WHATS AHEAD™**