

AC216 Series

Premium Series, Magnet Mount Accelerometer, Side Exit Connector, 100 mV/g

SECTION I - ACCELEROMETERS
AC216 Series



Actual Product Size Shown



Product Features

Premium Route-Based Sensor

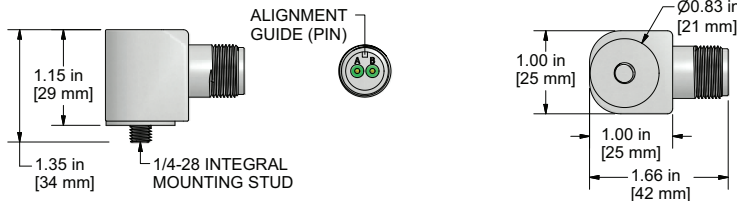
High Performance at a Reasonable Price

- Specifically Designed to Use with MH214-3A Magnet
- Comfortable Ergonomic Design Makes Data Collection Easy
- ± 80 g, Dynamic Range, $\pm 5\%$ Sensitivity

AC216-1A

2 Pin Connector

Connector Pin	Polarity
A	(+) Signal / Power
B	(-) Common



Specifications	Standard	Metric
Part Number	AC216	
Sensitivity ($\pm 10\%$)	100 mV/g	
Frequency Response (± 3 dB)	30-900,000 CPM	0,5-15000 Hz
Frequency Response ($\pm 10\%$)	60-600,000 CPM	1,0-10000 Hz
Frequency Response ($\pm 5\%$)	120-420,000 CPM	2,0-7000 Hz
Dynamic Range	± 80 g, peak	
Electrical		
Settling Time	<2.5 seconds	
Voltage Source	18-30 VDC	
Constant Current Excitation	2-10 mA	
Spectral Noise @ 10 Hz	8 μ g/ \sqrt Hz	
Spectral Noise @ 100 Hz	0.82 μ g/ \sqrt Hz	
Spectral Noise @ 1000 Hz	0.3 μ g/ \sqrt Hz	
Output Impedance	<100 ohm	
Bias Output Voltage	10-14 VDC	
Case Isolation	$>10^8$ ohm	

Specifications	Standard	Metric
Environmental		
Temperature Range	-58 to 250° F	-50 to 121°C
Maximum Shock Protection	5,000 g, peak	
Electromagnetic Sensitivity	CE	
Sealing	Welded, Hermetic	
Physical		
Sensing Element	PZT Ceramic	
Sensing Structure	Shear Mode	
Weight	4.4 oz	124 grams
Case Material	316L Stainless Steel	
Mounting	1/4-28	
Connector (non-integral)	2 Pin MIL-C-5015	
Resonant Frequency	1,380,000 CPM	23000 Hz
Mounting Torque	2 to 5 ft. lbs.	2,7 to 6,8 Nm
Mounting Hardware	1/4-28 Stud	M6x1 Adapter Stud
Calibration Certificate	CA10	

Ordering Information

Standard	AC216-1A (1/4-28 Stud)
----------	---------------------------

Backed by our Unconditional Lifetime Warranty

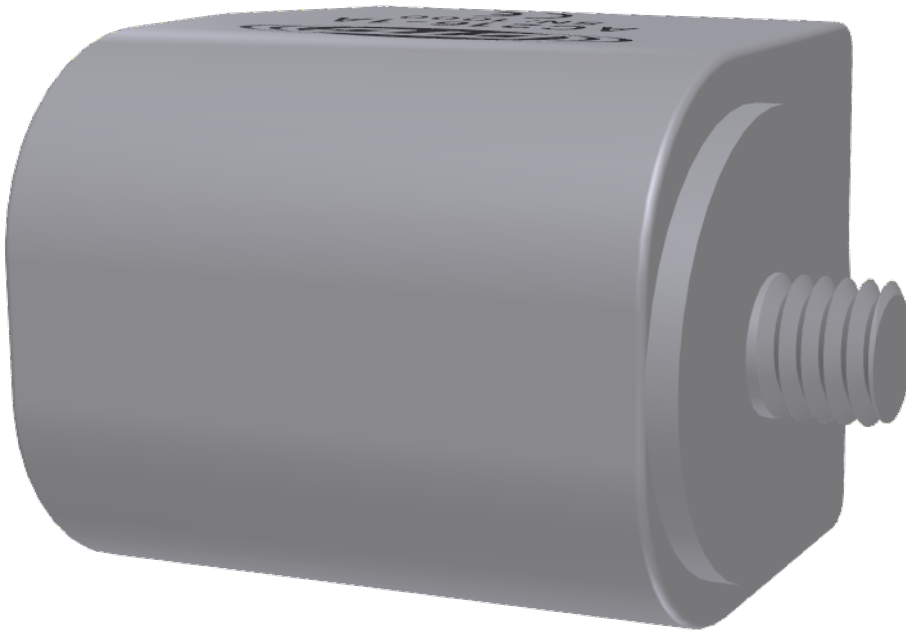
www.ctconline.com





VIBRATION ANALYSIS HARDWARE

- LEFT CLICK & DRAG TO ROTATE MODEL
- RIGHT CLICK & DRAG TO ZOOM
- HOLD BOTH MOUSE BUTTONS TO PAN



ADOBE®
READER® 9.3
RECOMMENDED
(Adobe® Reader® 8 Required)

[CLICK TO DOWNLOAD!](#)

[CLICK HERE FOR HELP](#)

[CLICK HERE FOR HELP](#)

[BACK TO MAIN
DATA SHEET](#)



Backed by our Unconditional Lifetime Warranty

www.ctconline.com

• 800-999-5290