

# SoundCTRL 2.0

## Ultrasound Data Capture & Instant Analysis

**SoundCTRL 2.0** (pronounced "sound control") allows maintainers to quickly test and receive real-time feedback from bearings, gears, motors, pumps and valves. Testing takes seconds and results are instant.



### Instantly see, hear, monitor and diagnose

- bearings
- gears
- pumps
- valves
- cylinders

### Get instant feedback

- view ultrasound waveform from plant floor
- calculates root mean square
- provides event indication
- audio/visual playback

### Integrates with InCTRL for web-based analysis\*

- access test data via internet, 24/7
- wirelessly upload results to InCTRL
- instant health assessment for bearings
- real-time threshold conditions and test point status
- receive email alerts
- trend, report & analyze data

### Record, preserve and organize

- records 20 seconds of ultrasound for each sample
- simple play, stop & record buttons
- identify files by location & test point
- timestamps automatically saved
- notes field for general information
- field for UL101 settings

### Pioneering the Way

SoundCTRL is the only handheld ultrasound data capture device that instantly provides an ultrasonic waveform of the component under test. SoundCTRL offers wireless data uploads to InCTRL, CTRL's online trending and analysis system.

[www.ctrlsys.com](http://www.ctrlsys.com)

(p) 877.287.5797

(f) 410.848.8073



*Innovative Sound Solutions™*

# Testing takes seconds and results are instant



## SoundCTRL Benefits

- make on-the-spot maintenance decisions
- get instant feedback
- schedule maintenance tasks before failure
- increase machine life
- justify costs
- organize ultrasound data

## How does SoundCTRL Work?

The UL101 detects ultrasound produced by your equipment and converts it to audible frequencies. SoundCTRL uses CTRL-developed algorithms to capture and process the signal produced by the UL101.

## Pocket PC Specifications

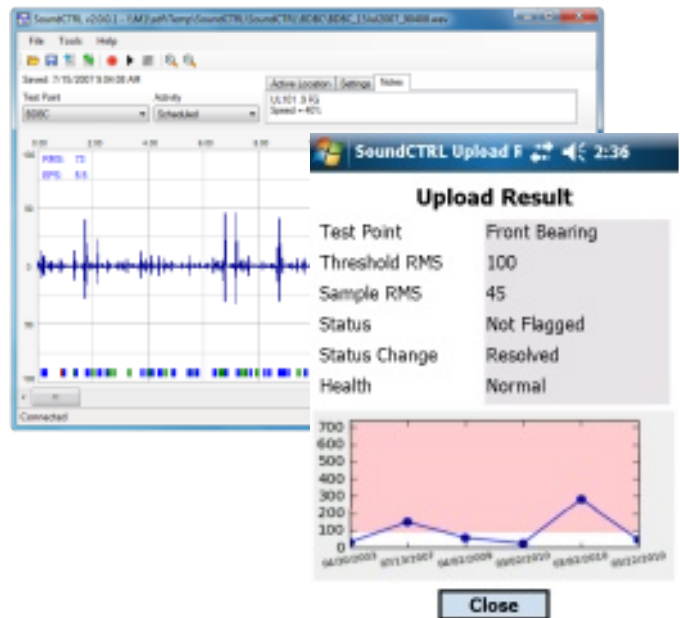
- HP iPAQ 210 Series (or compatible PDAs)
- screen: 4-inches, full color
- weight: 8.6 oz

## Data Storage

- typical: 300 ultrasound samples @ 20 sec each
- upgrade with SD Card

## PC Requirements

- Windows Vista or XP (2000 not supported)
- PC interface: USB
- Internet connection required for use with InCTRL



## Quick Start Training

CTRL provides quick start training programs for SoundCTRL; training customers in less than two days. Class topics include: introduction to ultrasound, setting up equipment and test points, testing practices and hands-on learning.

## Turnkey Ultrasound Implementation & Training

Program components include: consultation, customized training manual, product delivery, training/implementation and support.

## Customized Training

Let CTRL design a training class to meet your organization's needs.

\* Wireless features require an InCTRL subscription and a wireless internet connection

