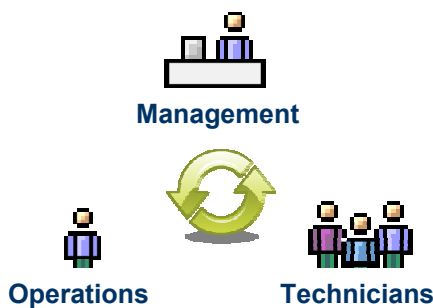


Integrating Ultrasound Solutions

- *Develop corporate standards for monitoring critical equipment.*
- *Train new technicians and managers quickly.*
- *Share ultrasound test data and results between locations.*
- *Make informed corporate and management decisions.*
- *Achieve energy savings and cost reductions.*



Integrate technology and people for improved maintenance performance.

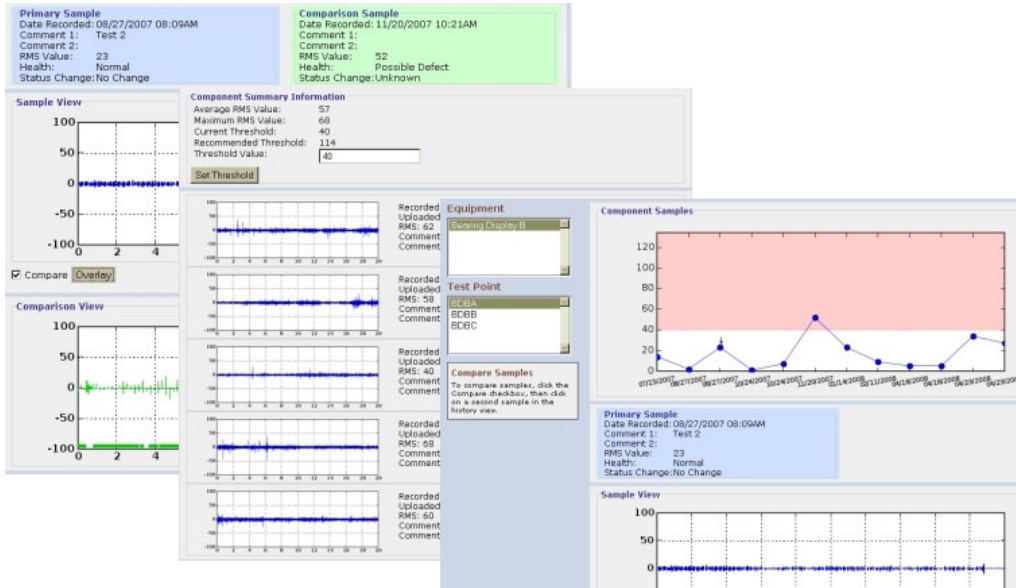
A New Turnkey Approach For Ultrasound Technology

InCTRL incorporates CTRL technology and innovation for improved maintenance practices, cost savings, and equipment reliability.

The solution combines a data management and analysis system with data collection software and ultrasound

sensors for condition based monitoring of critical mechanical equipment, pressure & vacuum leak detection, and detection of electrical arcing & discharge.

CTRL solutions are uniquely designed to give forward thinking organizations unparalleled control over their production equipment and systems.



Use the Web to access data and reports for critical equipment from any location.

Web Access For Corporate Level Decision-Making

With InCTRL, you have access through the Web to the data gathered by the maintenance personnel. Managers at every level in your organization can make informed decisions that affect your bottom line. InCTRL systems and data are maintained and secured by CTRL Systems so you do not have to worry about the installation, upgrades, backups, or overall operating expenses. CTRL delivers the data and

reports to your computer through a secure Web-based application.

The information provided by routine monitoring of critical systems using CTRL ultrasound technology will help your organization improve control, establish corporate standards, and develop better maintenance practices.

Corporate Standards For Maintenance Practices

InCTRL's systematic integration plan binds ultrasound data together with reporting and analysis to help you achieve the

expected returns on investment in the shortest time.

Integration incorporates training, documentation, milestones, benchmarking, and support.

InCTRL helps you keep track of the execution of the standards and their results. You can make changes to your procedures and build new applications for technology integration based upon the outcome of initial implementation.

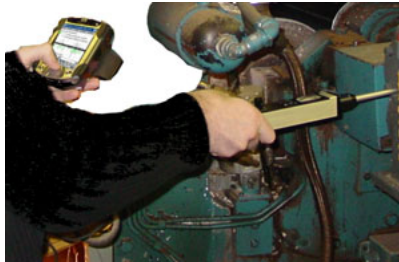
InCTRL Components

Corporate Access



The InCTRL Integrated Solution includes web-based data analysis and reporting for corporate-wide access from technicians to upper-level management.

Data Acquisition For Condition Based Monitoring



The UL101 and SoundCTRL is a powerful data acquisition and analysis system for condition based monitoring of critical equipment.

Long Range Detection For Energy Savings



The UL101 and its attachments, like the PowerBeam 300, are utilized to extend the range of detection for pressure and vacuum leaks, electrical arcing and discharge, steam trap monitoring and more.

Benefits

- Simplify data collection.
- Organize data collection, planned maintenance, and schedules.
- Flag suspect equipment.
- Notify management of potential problems automatically.
- Trend ultrasound test data with graphs and reports.
- Compare ultrasound test data easily.
- Share important test data via the Web.
- Create reports with key data metrics for individual pieces of equipment or entire locations.
- Export report data for customized reports.

Get InCTRL

Contact CTRL Systems today to place an order or to request a quotation.



InCTRL Integration Plans

	Basic	Standard	Corporate
Minimum # Sites	1	1	10
Web Application Contract	1 Year	1 Year	2 Years
Max Storage*	1 GB	3 GB	3 GB per site
Max Users	1	5	Unlimited
SoundCTRL License	1	2	10
UL101 Full Kit	1	2	10
On-Site Training		1	2
Consultation Visits		1	5
Custom Corporate Manual			1
Support Visits			Quarterly

*1 GB ~ 50 test points recorded once per month over 3 years

CTRL Systems Corporate Office

1004 Littlestown Pike, Suite H
Westminster, MD 21157 USA

1.410.876.5676 phone • 1.877.287.5797 toll free
1.410.848.8073 fax • e-mail: info@ctrlsys.com

